

Installation & Uninstallation of CubexSoft PST to MSG Tool

Table of Contents

- 1) Introduction.....
- 2) System Requirements.....
- 3) Installing CubexSoft PST to MSG Tool.....
- 4) Uninstalling CubexSoft PST to MSG Tool.....
 - (a.) Uninstalling from Search Menu
 - (b.) Uninstalling from Control Panel

1. Introduction

Welcome to the Installation guide of CubexSoft PST to MSG Tool.

In the Installation manual of the product, we are going to learn or understand the steps of PST to MSG Tool installation. Except for Installation of the software, uninstallation process of the PST to MSG Tool is also included in this guide.

2. System Requirements

Before going to download and use the software, make sure that your machine should congregate the basic requirements.

- Windows Operating System, it will support all edition of Windows OS, including Windows 10.
- Minimum 30 MB Space is required in your machine.
- 1 GB RAM, 2.4 GHZ Processer is recommended

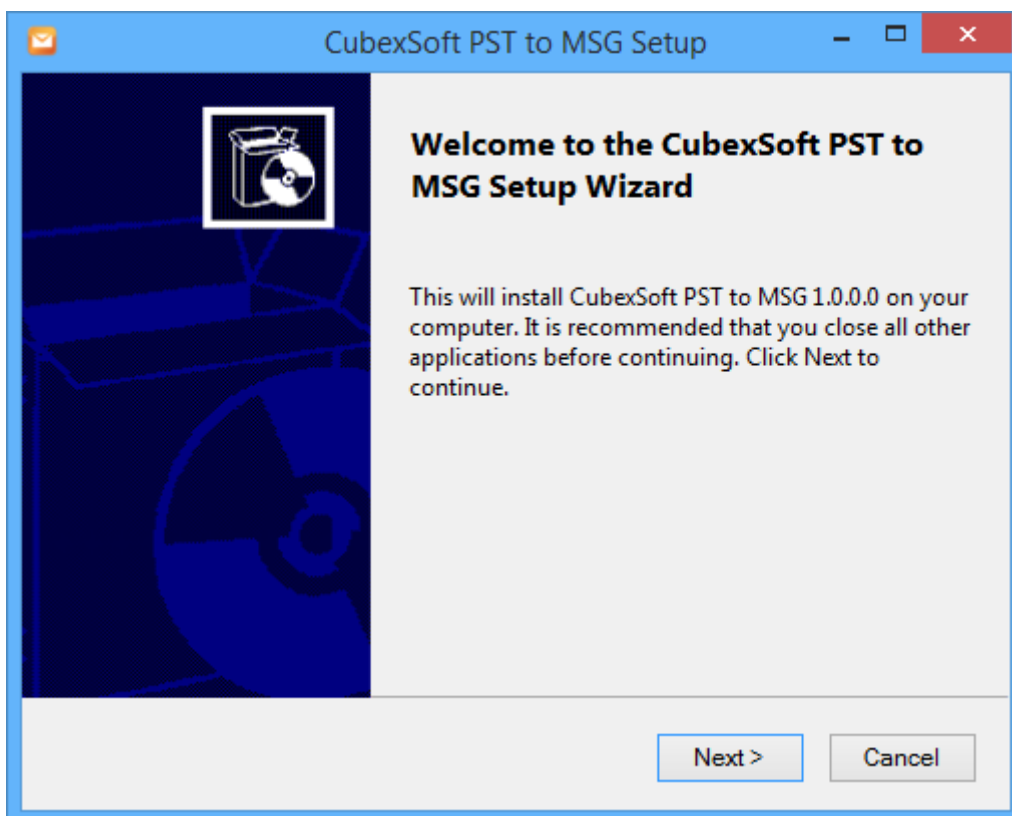
3. Installing CubexSoft PST to MSG Tool

For installing CubexSoft PST to MSG Tool, you need tool installer file on your computer/ machine/ system. If you don't have the software installer file then get this file from –

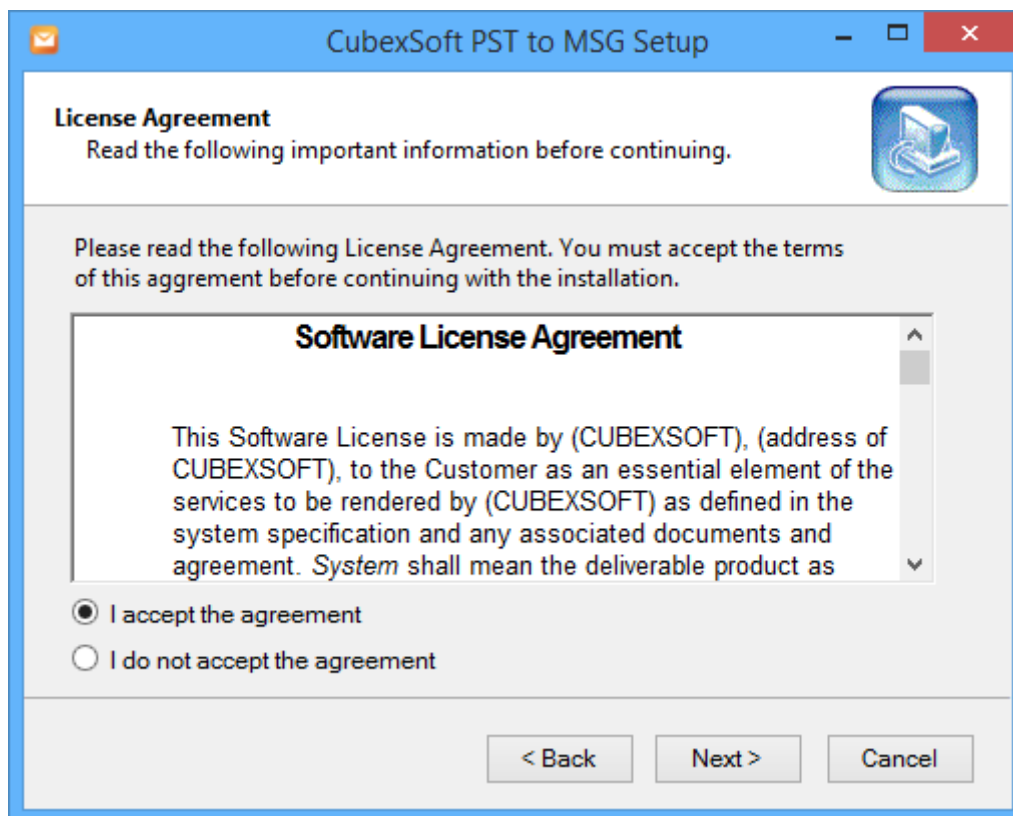
<http://www.cubexsoft.com/pst-to-msg/>

After downloading the software installer file, follow the given steps –

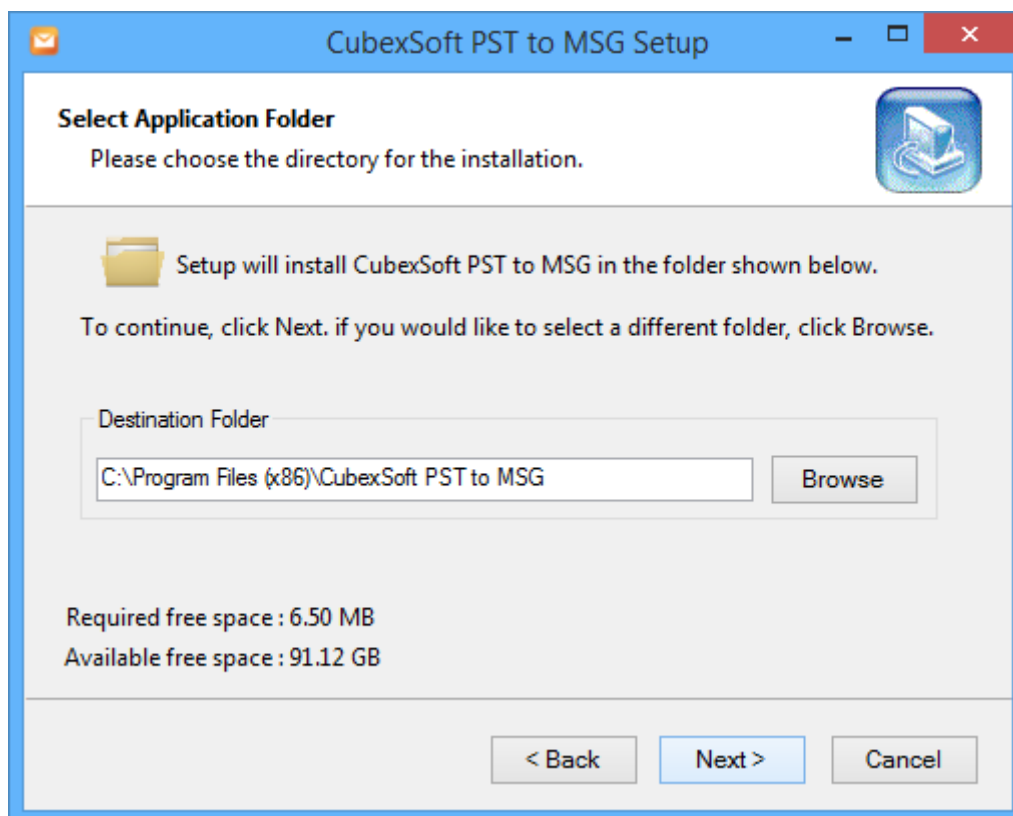
- Double Click on .exe installer file and then a new Window will open with Next Button –



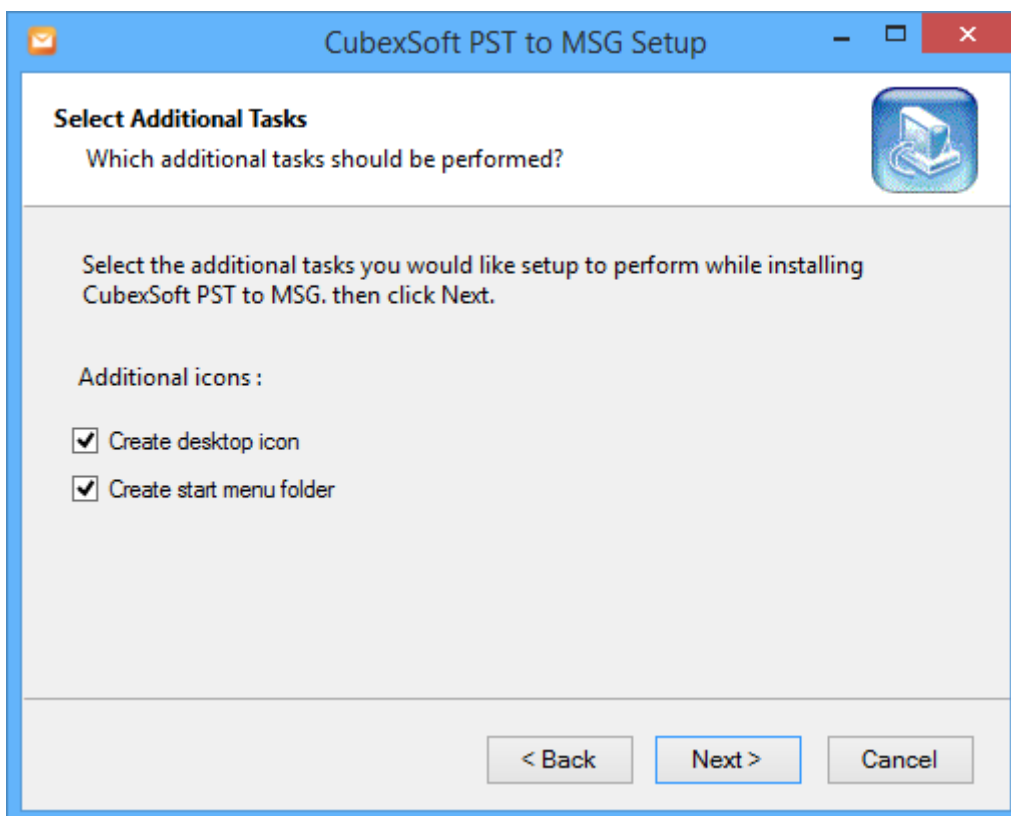
- Select “I accept the Agreement” Option and Click on Next Button



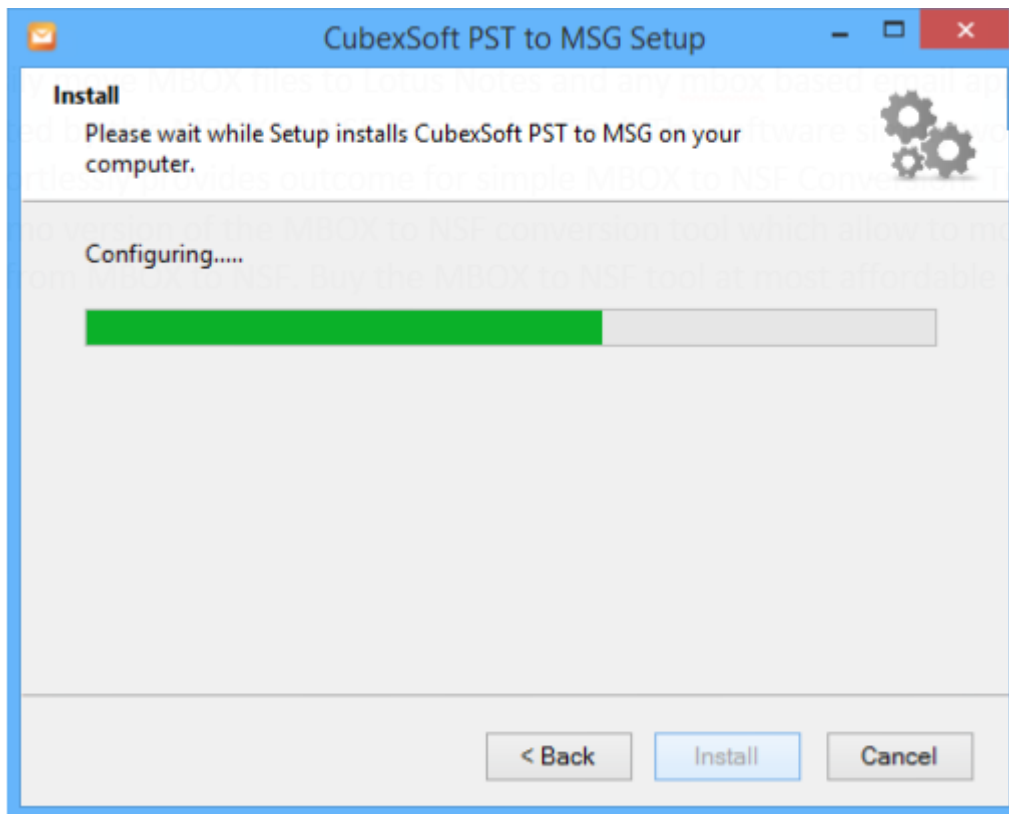
- Click on Browse button and select location where you want to save the software and click on Next



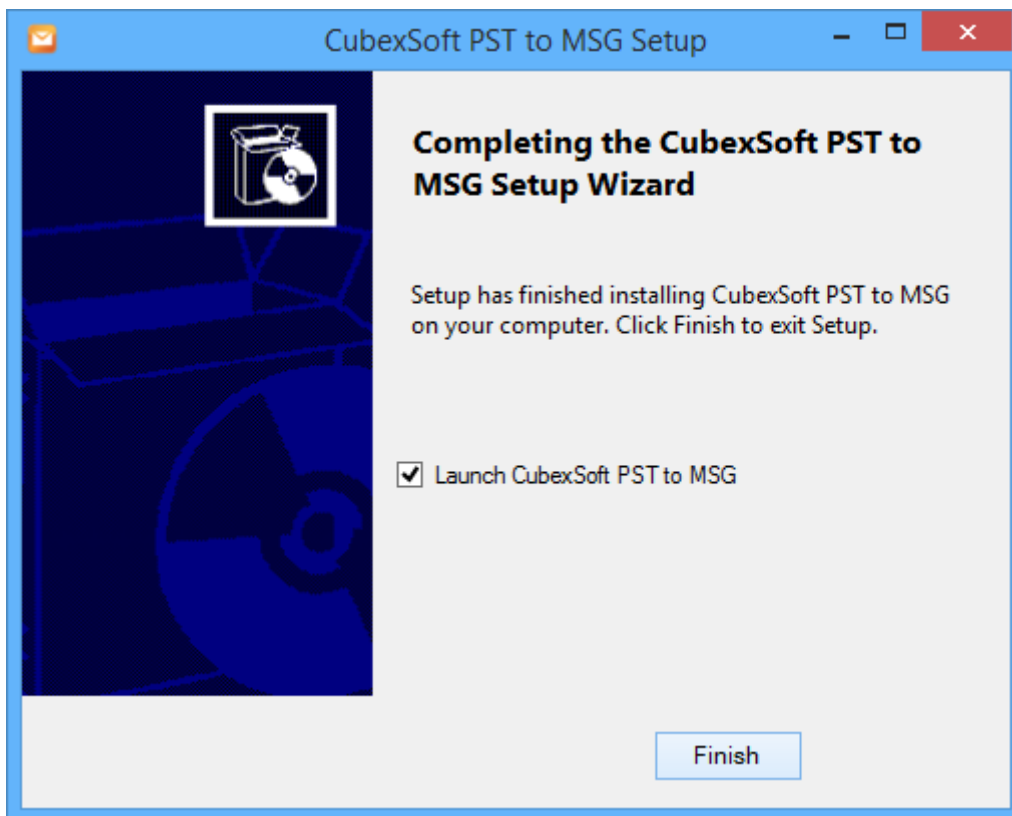
- Choose the Additional Icons which suits you for installing the software and click on “NEXT”



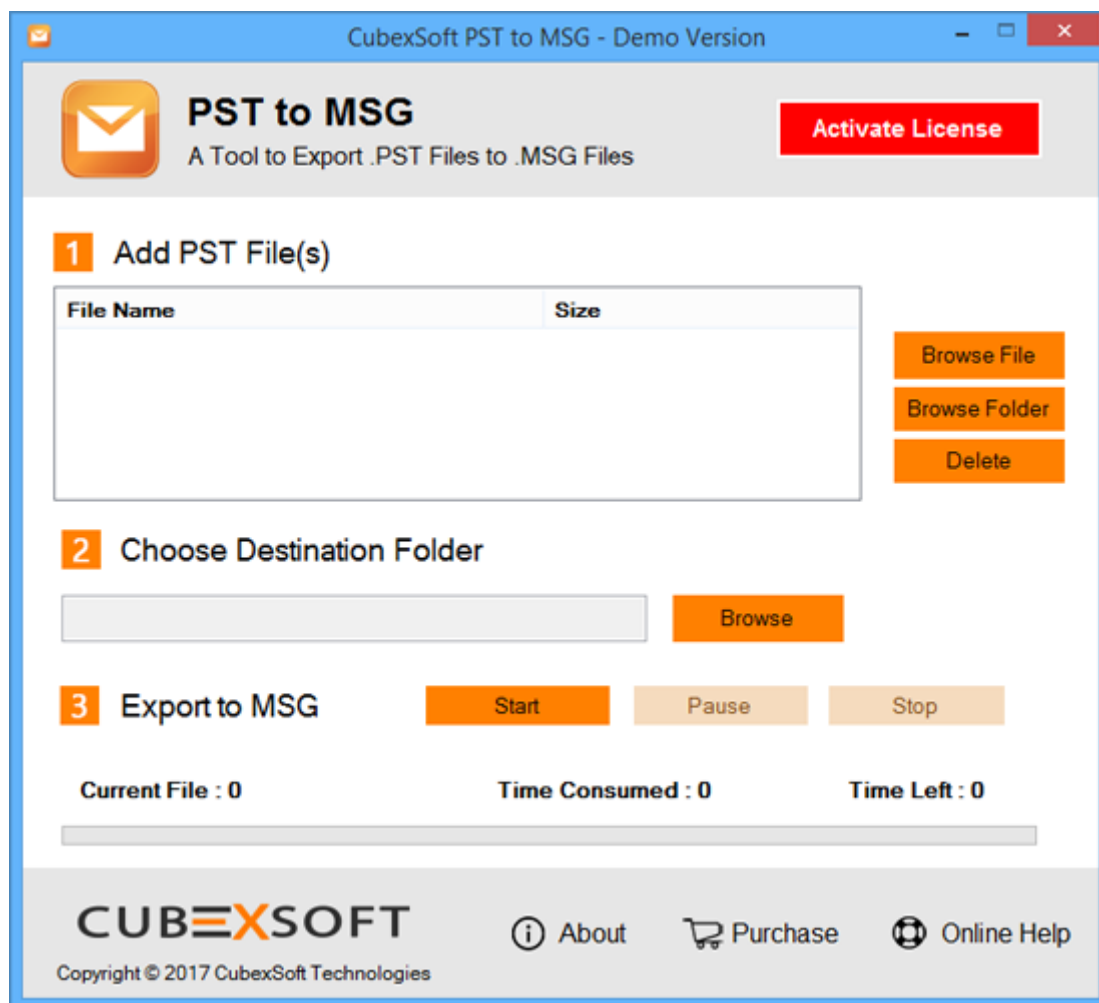
- The Tool Installation will be started with green status bar



- As the tool installation process is complete, “Completing CubexSoft PST to MSG Setup Wizard” message will appear. Now Click on Finish Button.



- After clicking on Finish button. The Software will be launched on your computer screen. The first screen of the software is appeared as below



Then Select your files and location to convert PST file to MSG file format.

4. Uninstalling CubexSoft PST to MSG Tool

To uninstall the CubexSoft PST to MSG Tool follow the given instructions –

Before uninstalling the CubexSoft PST to MSG Tool, make sure that the software is not running in the background of your system. Then you can uninstall the software by following two methods:

- Uninstall by the Search Button of your system
- Uninstall by the control panel

To remove the CubexSoft PST to MSG Tool by the search button, follow the given steps –

1. Go the Search Section of your computer



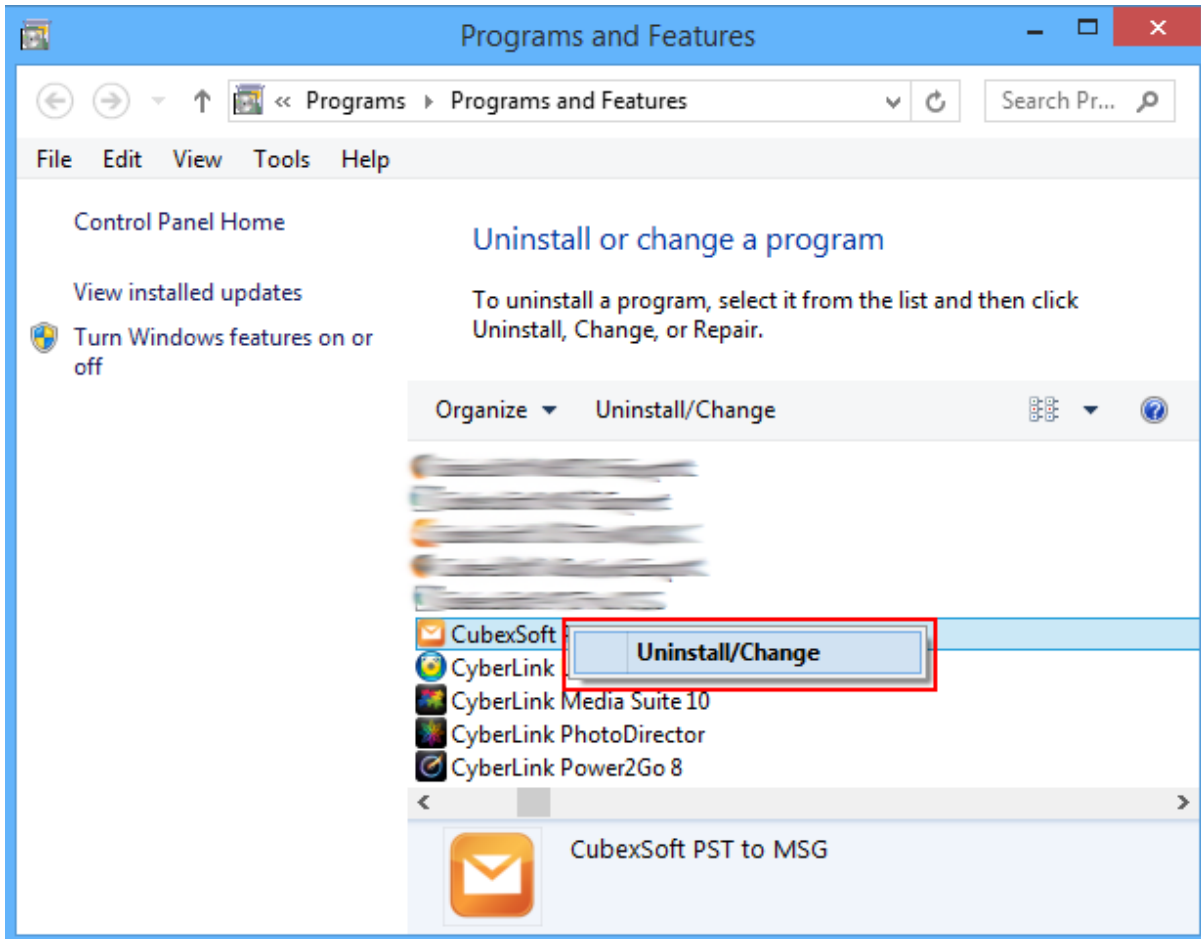
2. Then type PST to MSG and the Software of CubexSoft will be shown there—



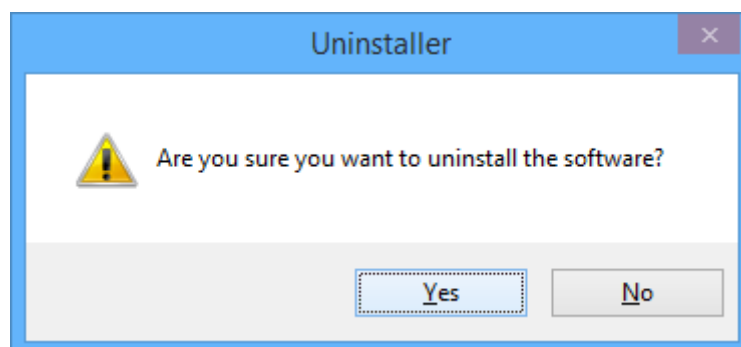
3. Now Right Click on the Software and there will be shown multiple options, choose uninstall –



4. Then Automatically “Program & Features” Window will be opened. Choose the CubexSoft PST to MSG Tool and right click on it. Then Uninstall/change option will be shown, Click on it.

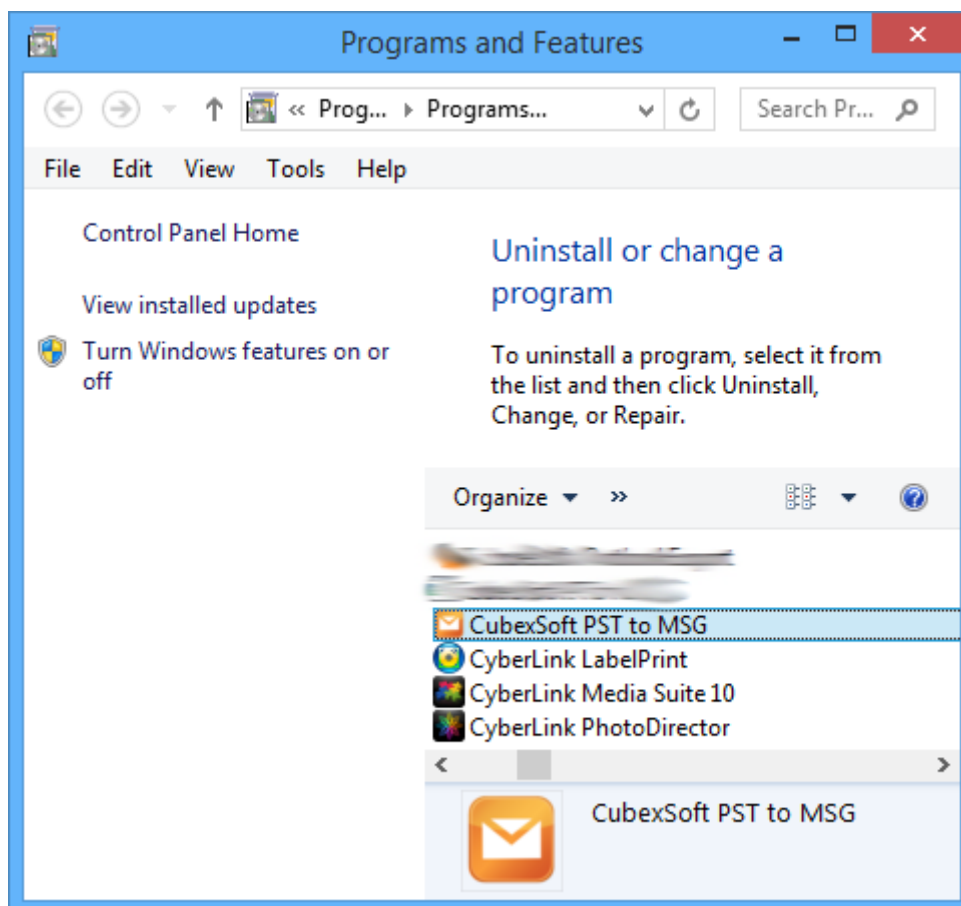


5. If you are sure then click on yes to remove the software

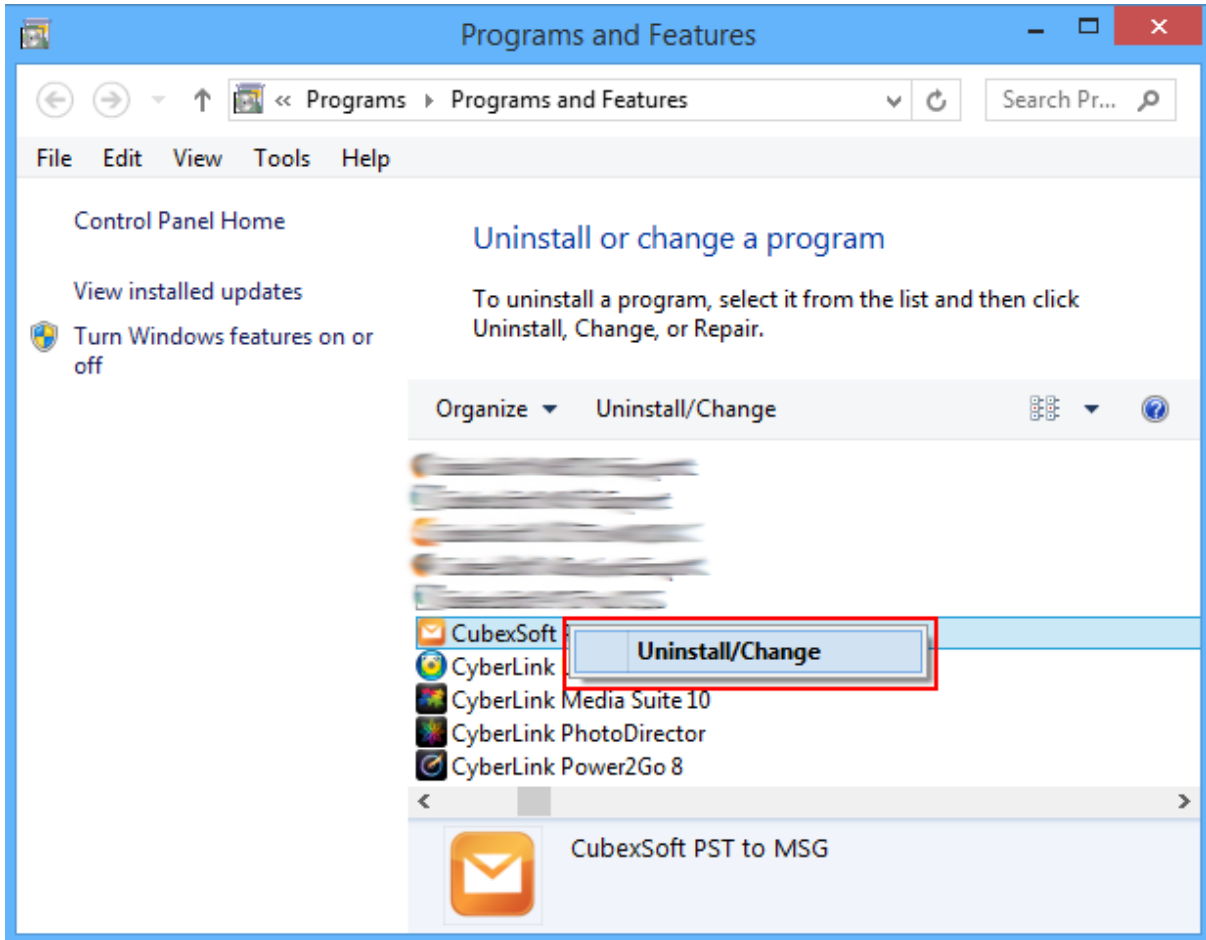


To remove the software by control panel method, follow the instruction –

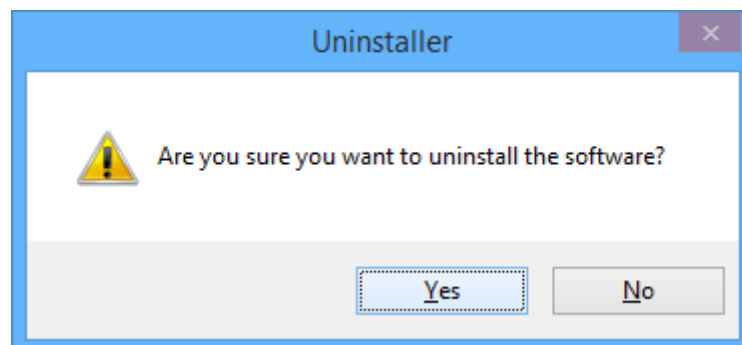
1. Open the control panel of your computer and select the software



2. Now Right Click on it and then the tab of Uninstall/ Change will be shown there, click on it



3. If you are sure for removing cubexSoft PST to MSG Tool then click on Yes Option.



After that, you can successfully remove the software from your system.