

## Installation & Uninstallation of CubexSoft Maildir Export Tool

### Table of Contents

- 1) Introduction.....
- 2) System Requirements.....
- 3) Installing CubexSoft Maildir Export.....
- 4) Uninstalling CubexSoft Maildir Export.....
  - (a.) Uninstalling from Search Menu
  - (b.) Uninstalling from Control Panel

# 1. Introduction

---

Welcome to the Installation guide of CubexSoft Maildir Export. In the Installation manual of the product, we are going to learn or understand the steps of Maildir Export installation. Except for Installation of the software, uninstallation process of the Maildir Export is also included in this guide.

# 2. System Requirements

---

Before going to download and use the software, make sure that your machine should congregate the basic requirements.

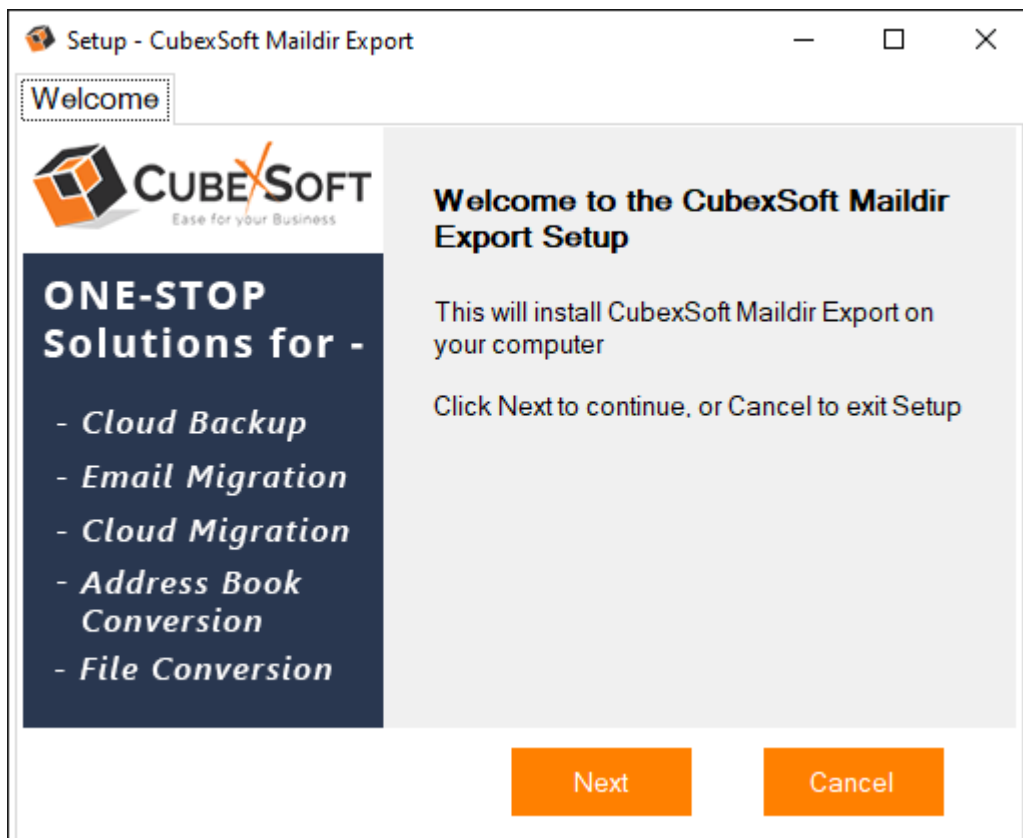
- Windows Operating System, it will support all edition of Windows OS, including Windows 10.
- Minimum 30 MB Space is required in your machine.
- 1 GB RAM, 2.4 GHZ Processer is recommended

### 3. Installing CubexSoft Maildir Export

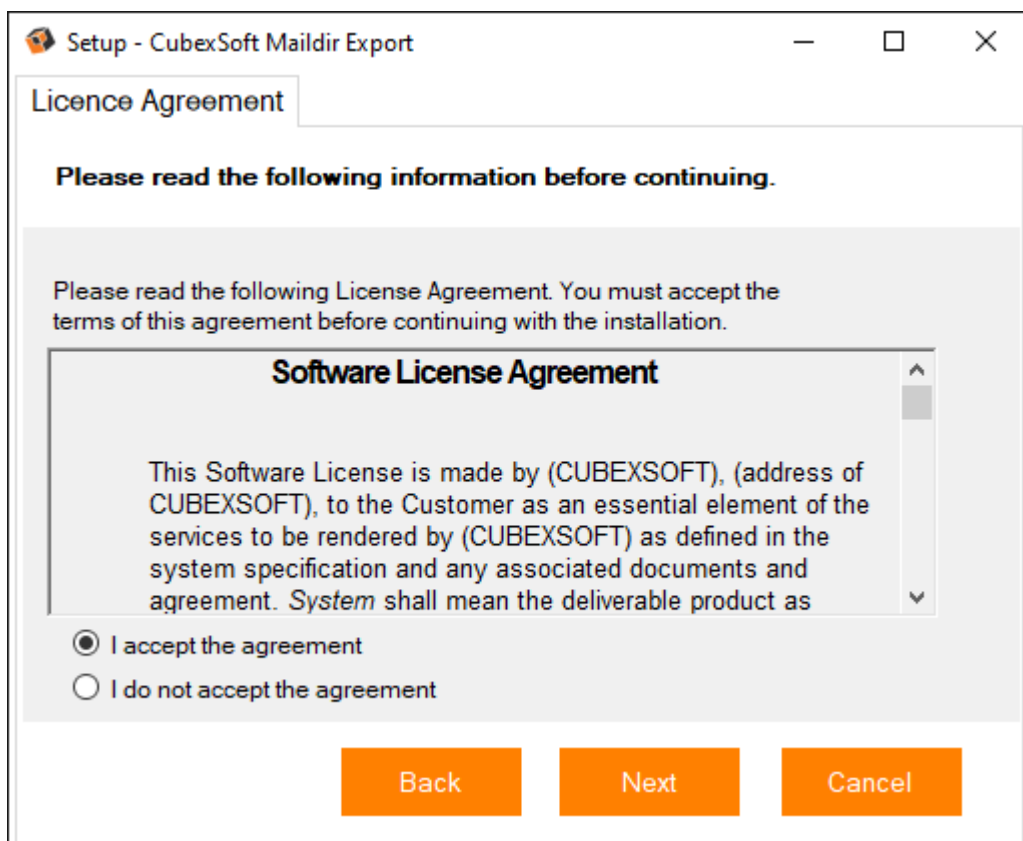
---

Follow given below steps for proper installation of Maildir Export

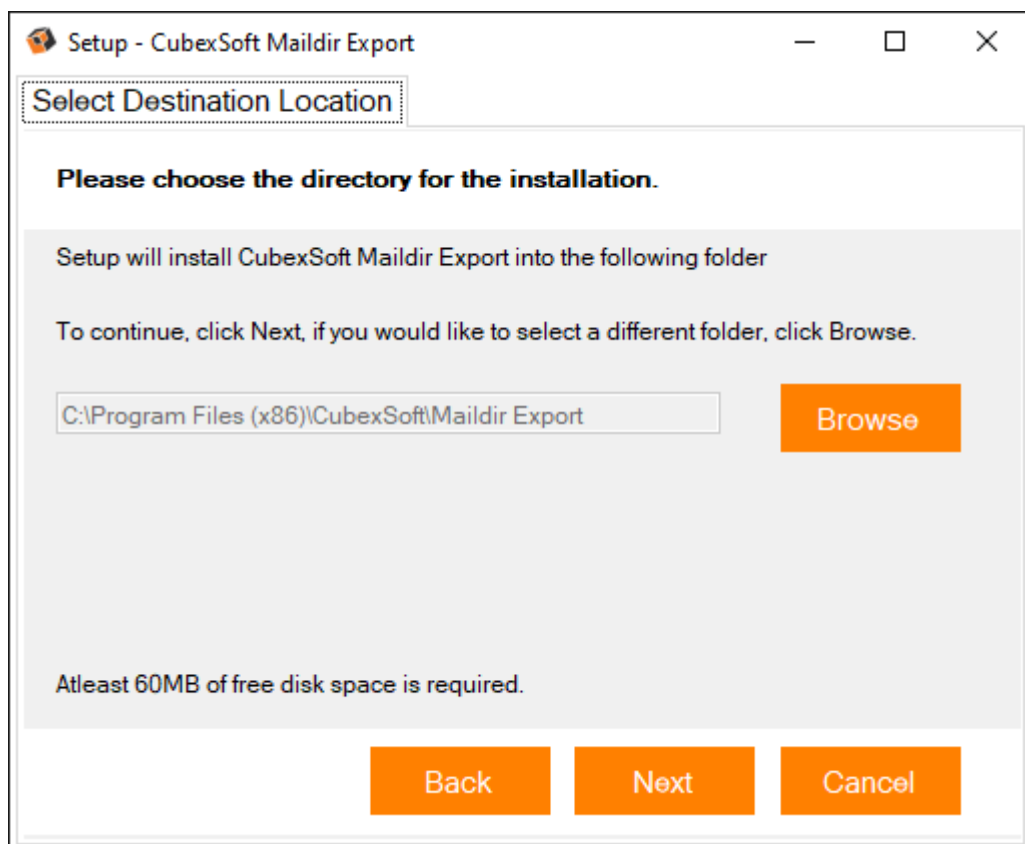
- Download installer file of Maildir Export Tool from the website – <https://www.cubexsoft.com/maildir/>
- Now double click on the **cubexsoft-maildir-export.exe** file. A new window will open, click Next button to move to next step.



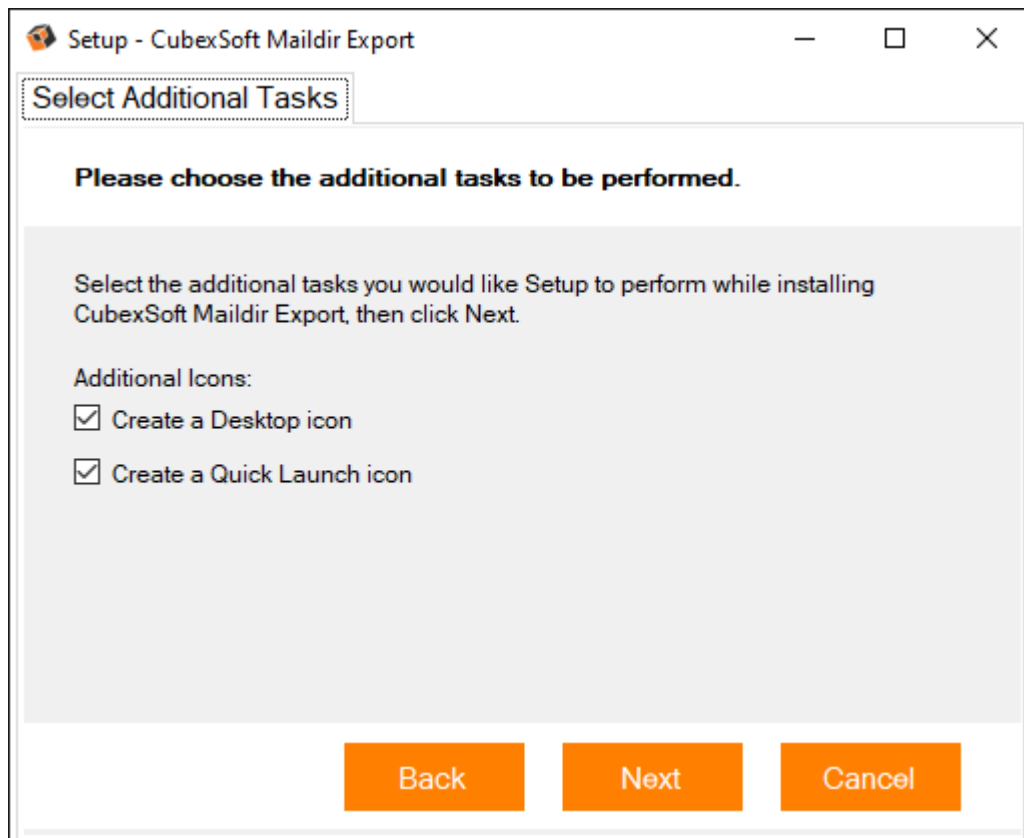
- Once you click the Next button, software license agreement window will appear. Select "**I accept the Agreement**" Option and Click on Next Button.



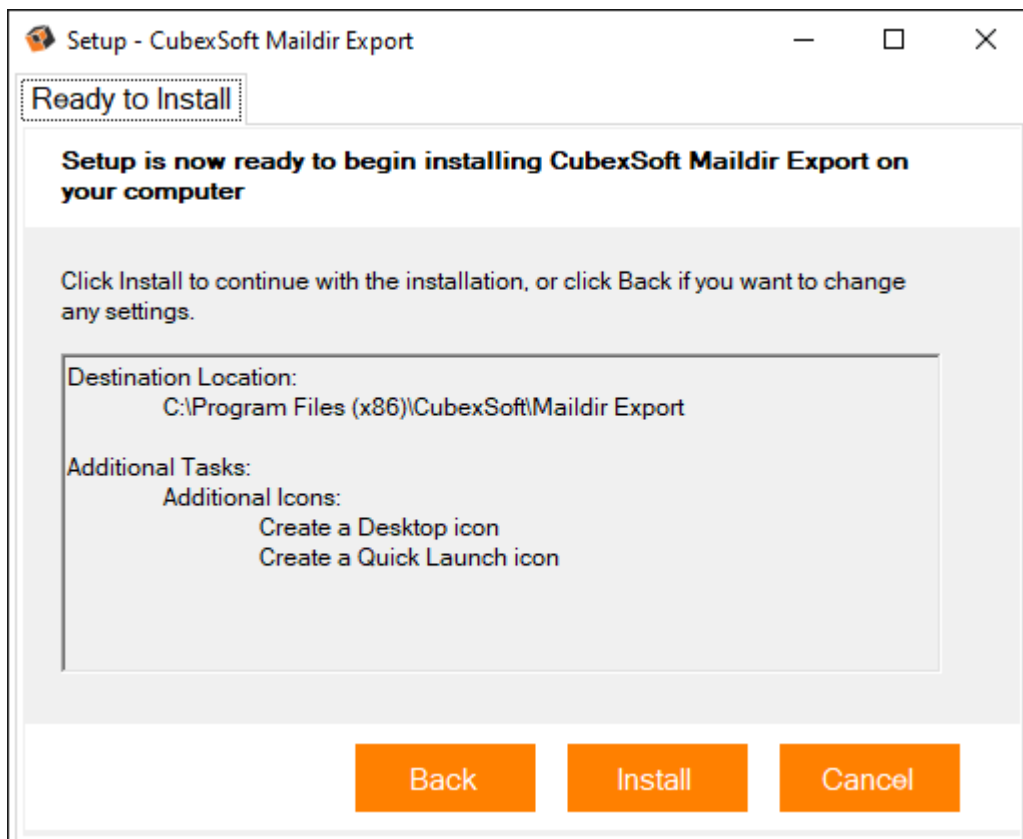
- In the next window, you will be prompted to browse the location where you want to save the application folder. The default location of software application folder is C:\Program Files (x86)\CubexSoft Maildir Export(v10.0). Click Next to move further.



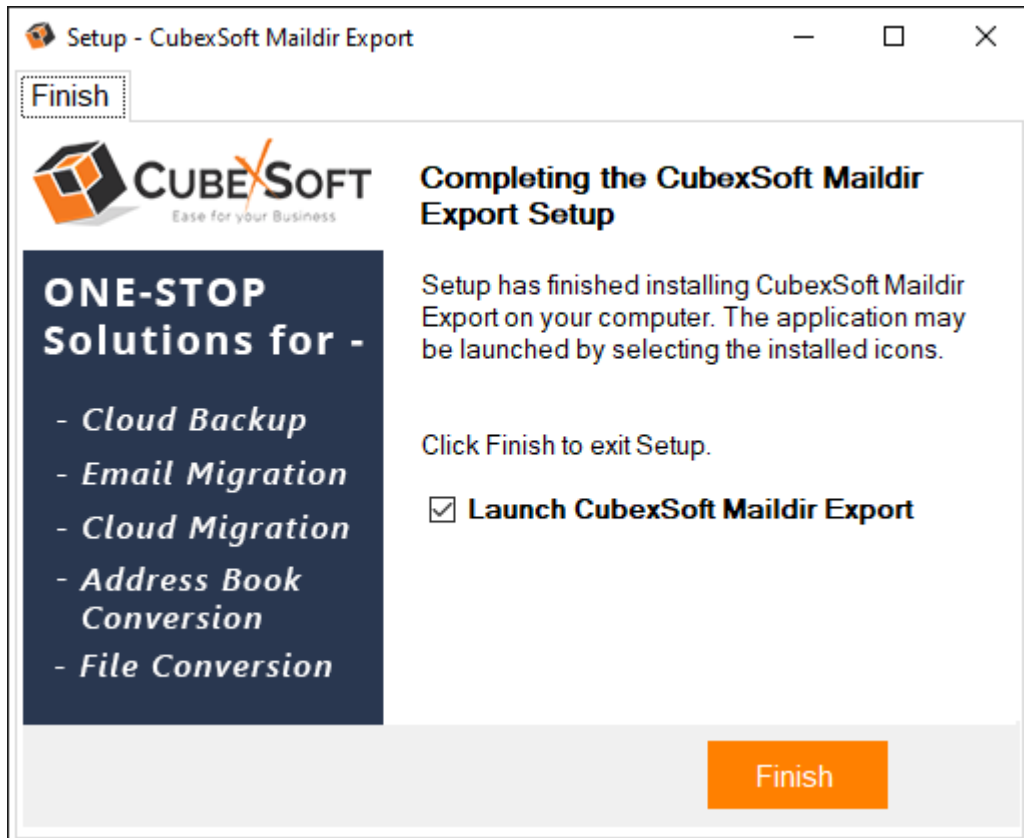
- Select the required checkboxes to create **Desktop Icon** of the software and **Start Menu folder** where the software shortcuts will be stored. click Next.



- After selecting the required options and clicking Next button, the setup give a message that the software is ready to install on your computer. Click on **Install** button to start the software installation process. On clicking Install button, the setup will start installing the software on your system.

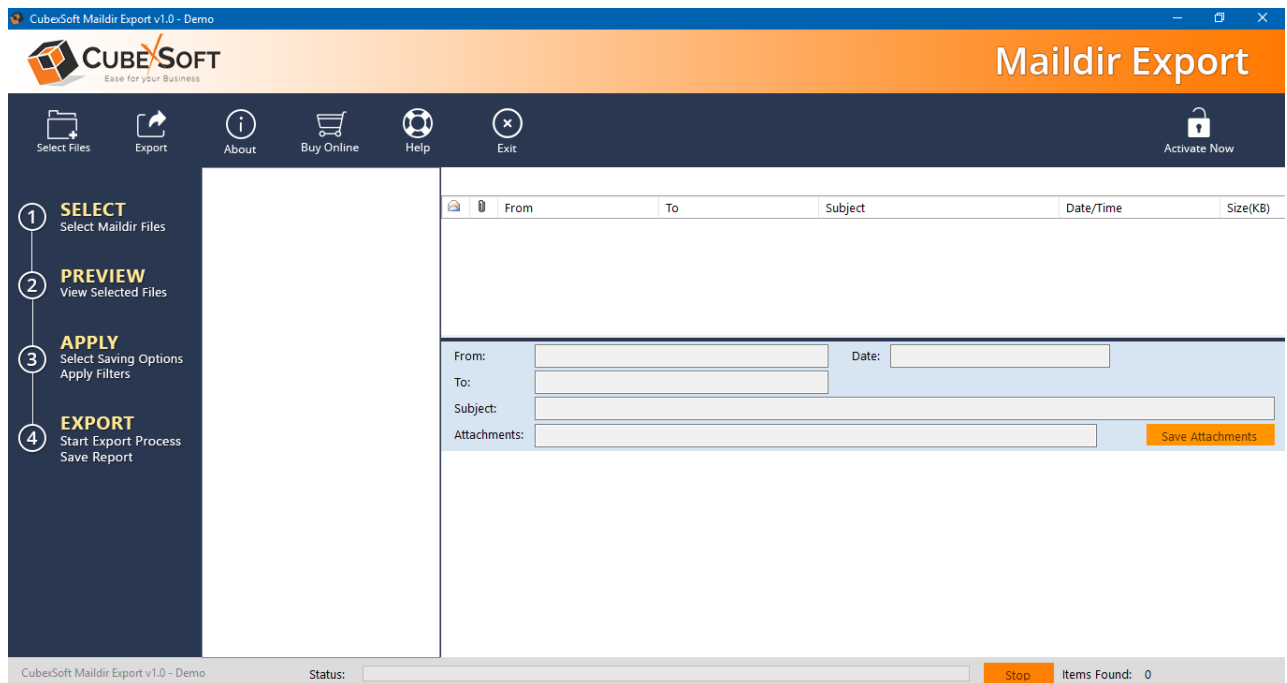


- After installation process is finished, the setup will open a window showing the installation confirmation message. Click on **Finish** to complete the process and exit setup.





- After clicking on Finish button. The Software will be launched on your computer screen. The first screen of the software is appeared as below:



# Uninstalling CubexSoft Maildir Export

---

## Uninstallation Guide of Maildir Export Tool

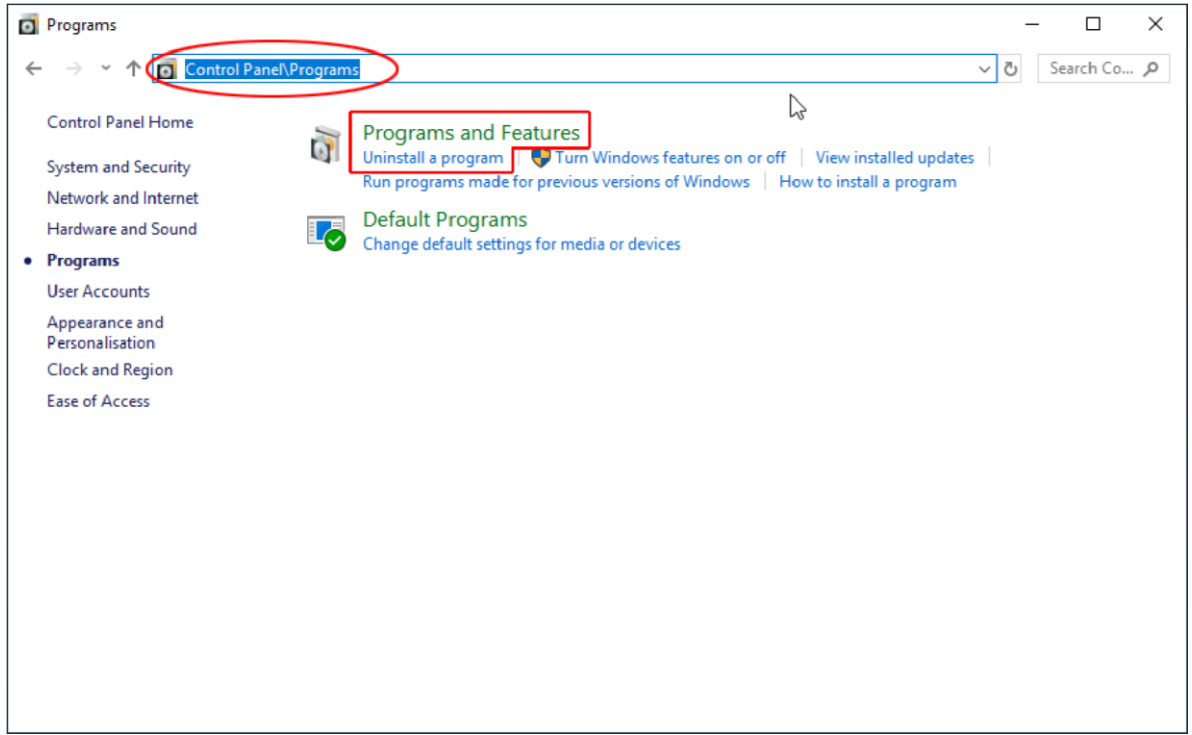
Follow the given instructions to uninstall the CubexSoft Maildir Export Tool. You can uninstall the software by following given steps:

**Important** : Before uninstalling the CubexSoft Maildir Export Tool, make sure that the software is not running in the background of your system.

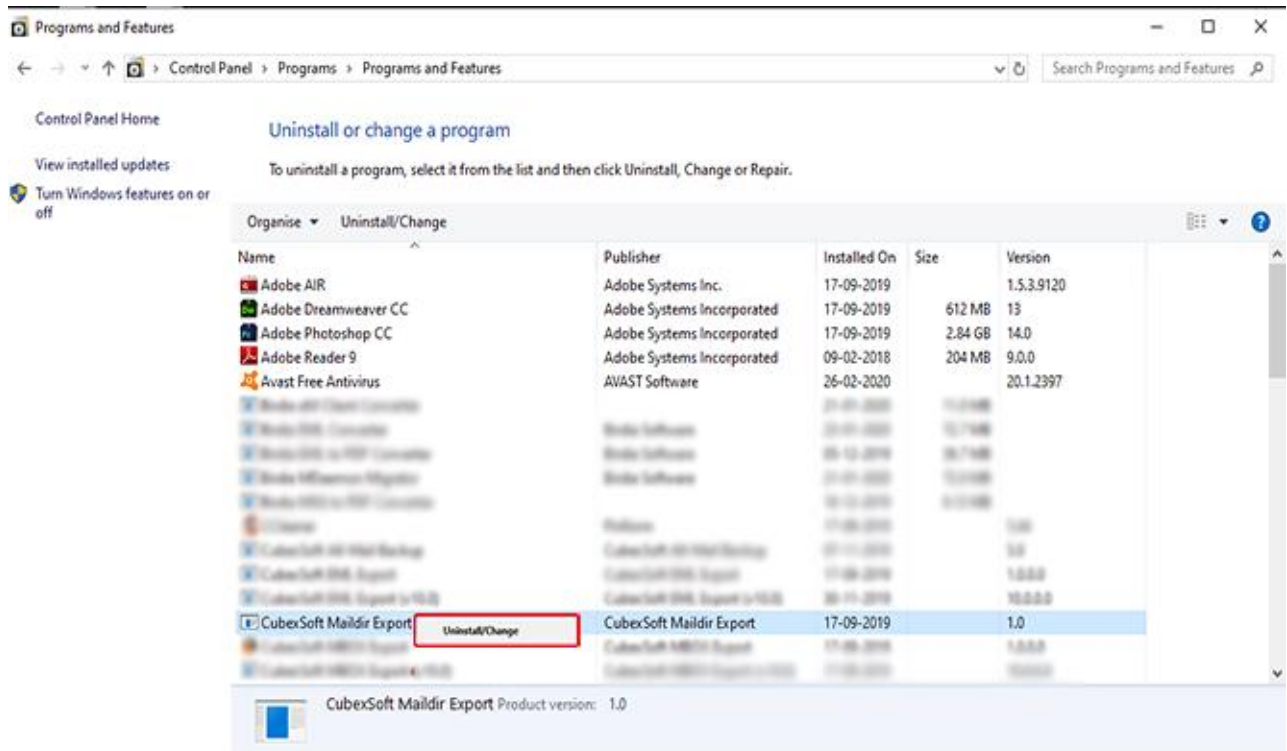
## Uninstall Software from Control Panel

Follow the below steps for performing uninstallation process from the Control Panel:

- Open "Control Panel >> Programs >> Programs & Features >> Uninstall or Change a program".



- Select the software for uninstall, right click with your mouse and select Uninstall/Change option.



- If you are sure of removing CubexSoft Maildir Export Tool from your system, then click on Yes Option.



- After successful uninstallation of the software, click on OK button to close the window.