

Installation & Uninstallation Guide of CubexSoft EML Duplicate Remover

Table of Contents

- 1) Introduction.....
- 2) System Requirements.....
- 3) Installing CubexSoft EML Duplicate Remover.....
- 4) Uninstalling CubexSoft EML Duplicate Remover.....
 - (a) Uninstalling from Search Menu
 - (b) Uninstalling from Control Panel

1. Introduction

Welcome to the Installation guide of CubexSoft EML Duplicate Remover.

In the Installation manual of the product, we are going to learn or understand the steps of EML Duplicate Remover installation. Except for Installation of the software, uninstallation process of the EML Duplicate Remover is also included in this guide.

2. System Requirements

Before going to download and use the software, make sure that your machine should meet the basic requirements.

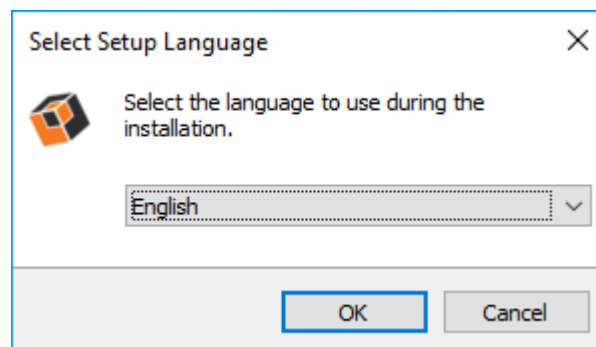
- Windows Operating System, it will support all edition of Windows OS, including Windows 11.
- Minimum 50 MB Space is required in your machine.
- 512 MB RAM, 2.4 GHZ Processor is recommended

3. Installing CubexSoft EML Duplicate Remover

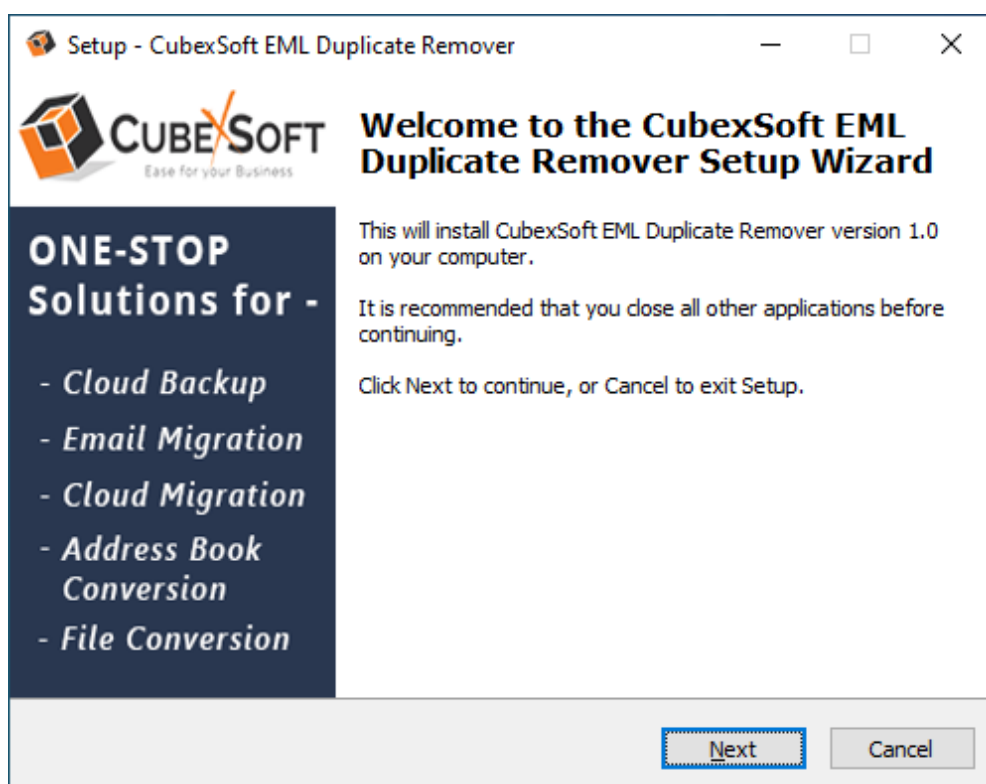
For installing CubexSoft EML Duplicate Remover, you need tool installer file on your computer/ machine/ system. If you don't have the software installer file then get this file from – <https://www.cubexsoft.com/eml-duplicate-remover/>

After downloading the software installer file, follow the given steps –

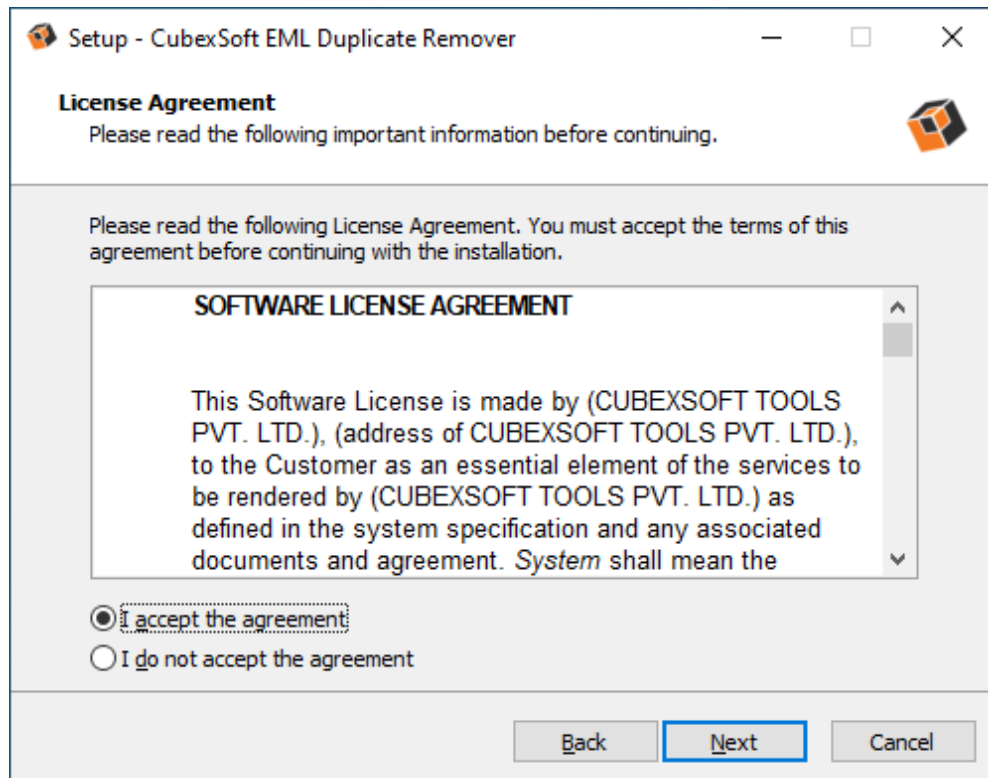
- Double Click on .exe installer file and then a new Window will open prompting you to select the preferred language and click OK –



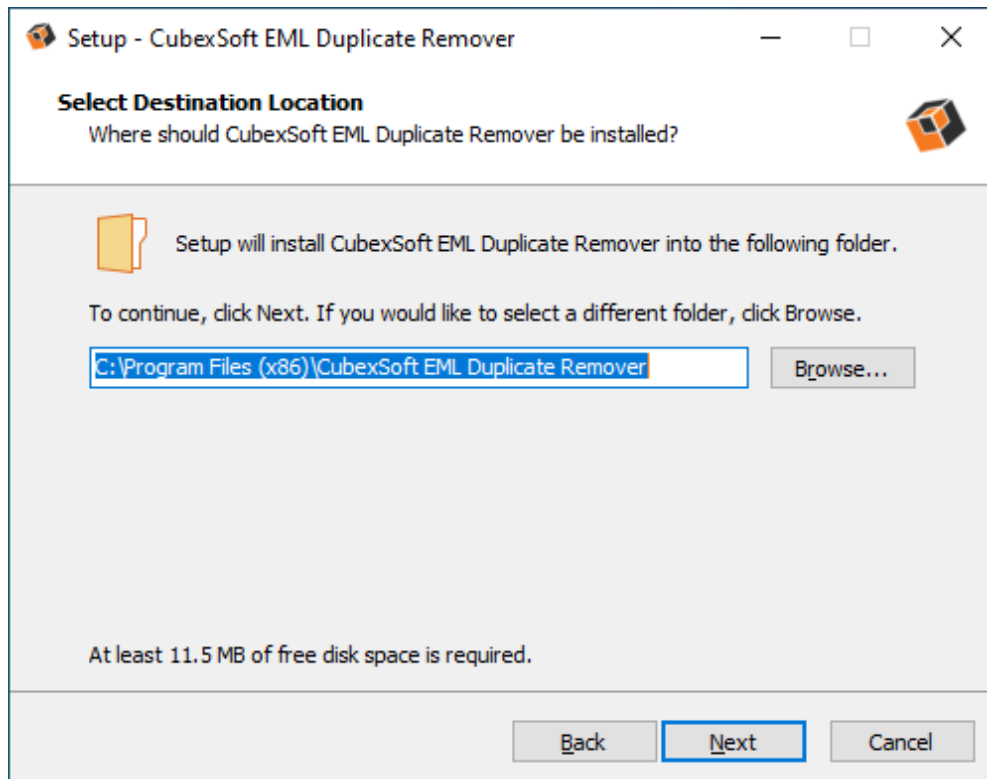
- After selecting the preferred language, the following Welcome screen will appear. Click on Next button to proceed further.



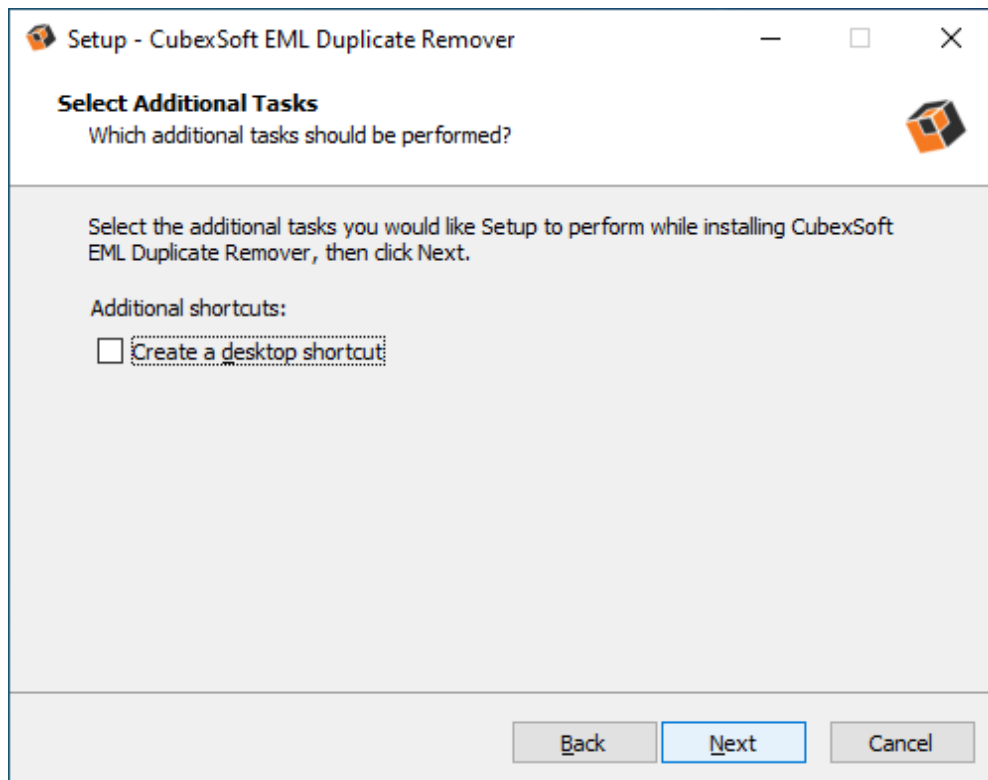
- Select “**I accept the Agreement**” Option and Click on Next Button



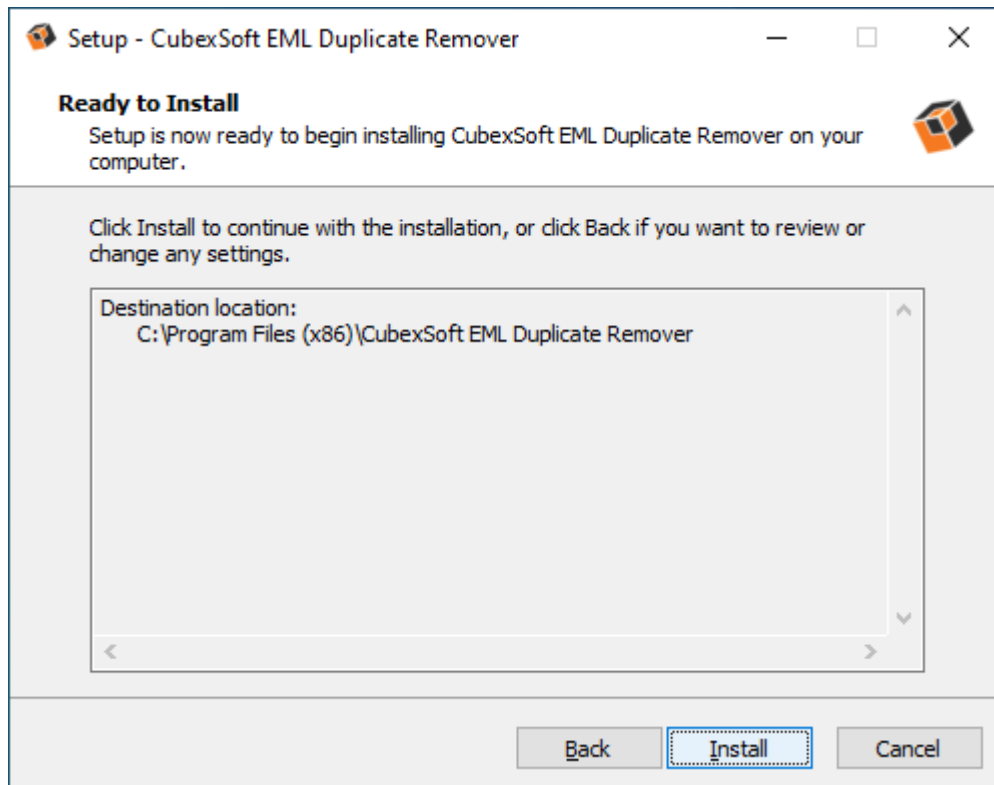
- Click on Browse button and select location where you want to save the software and click on Next



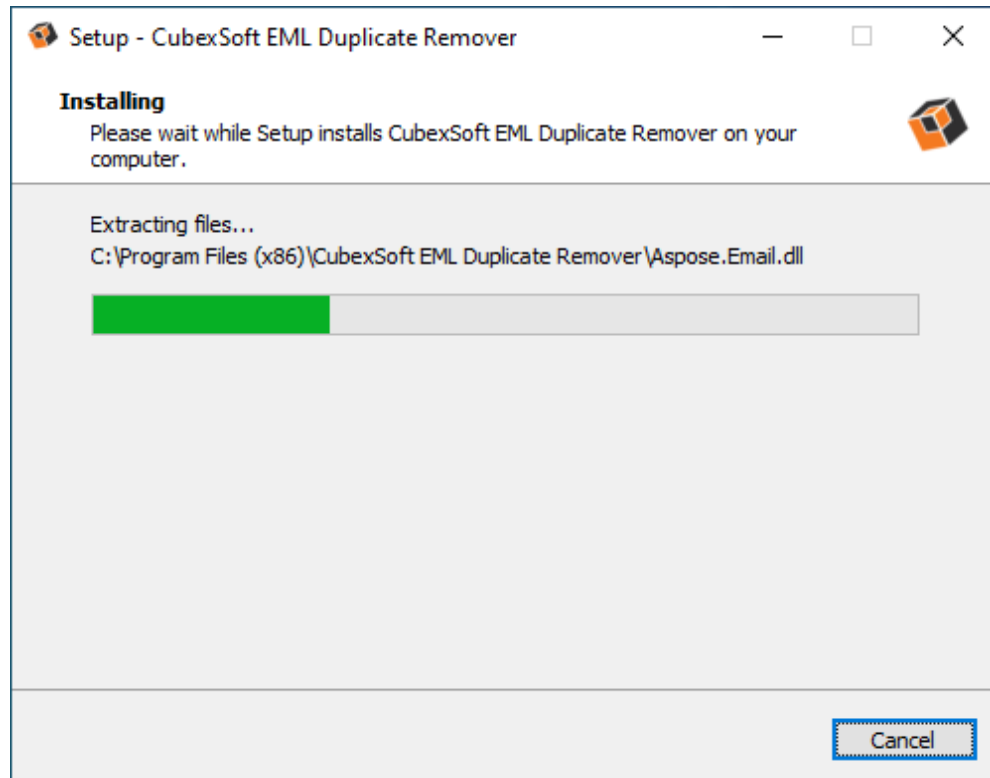
- Choose the Additional Shortcuts which suits you for installing the software and click on “NEXT”



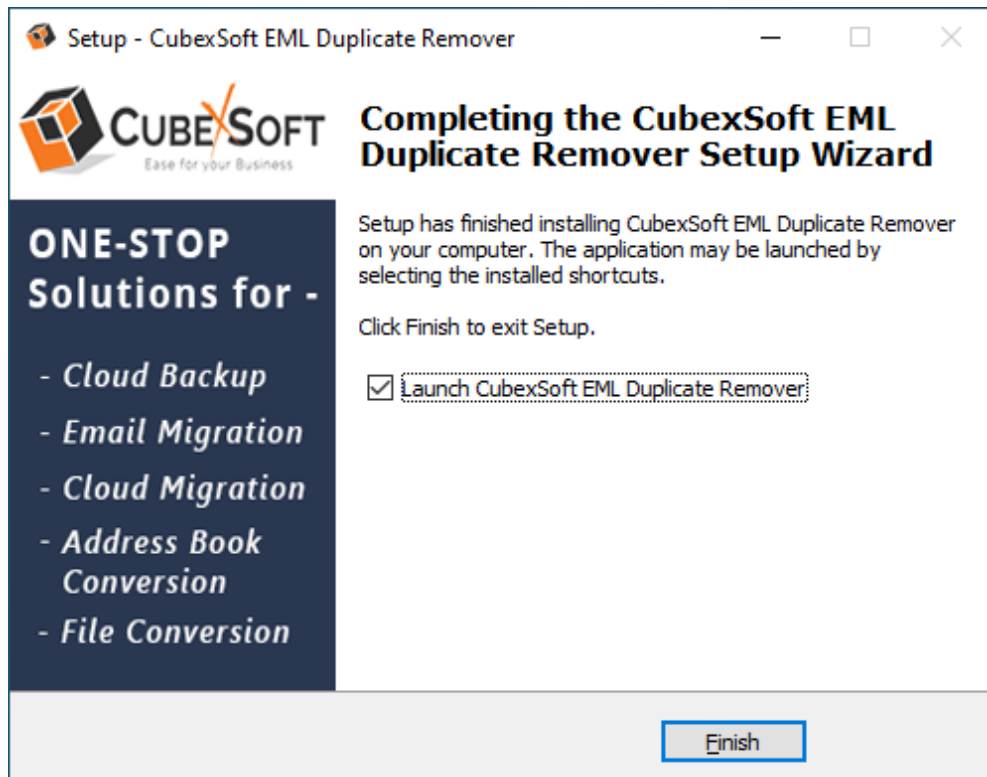
- Click on Install button to start the installation process.



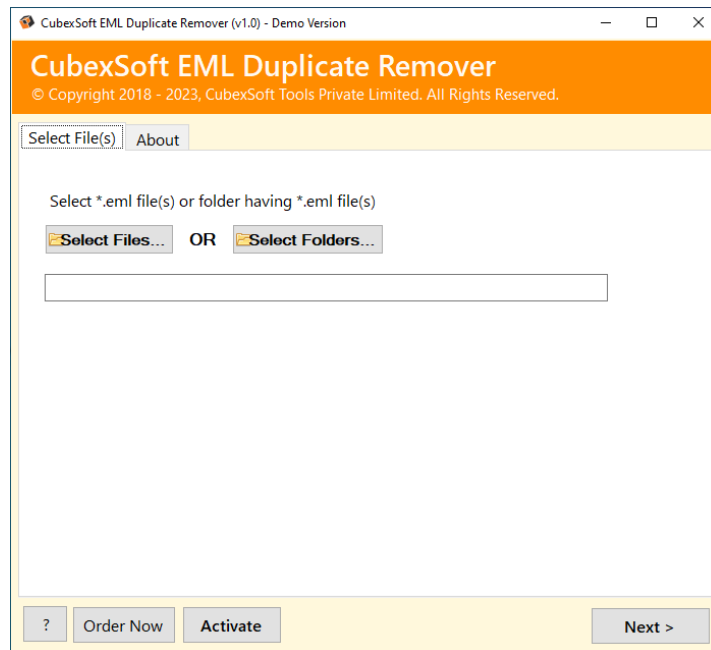
- The Tool Installation will be started with green status bar



- As the tool installation process is complete, “Completing CubexSoft EML Duplicate Remover Setup Wizard” message will appear. Now Click on Finish Button.



- After clicking on Finish button. The Software will be launched on your computer screen. The first screen of the software is appeared as below



Then select your MBOX files or Folder containing multiple MBOX files to remove duplicates from them.

4. Uninstalling CubexSoft EML Duplicate Remover

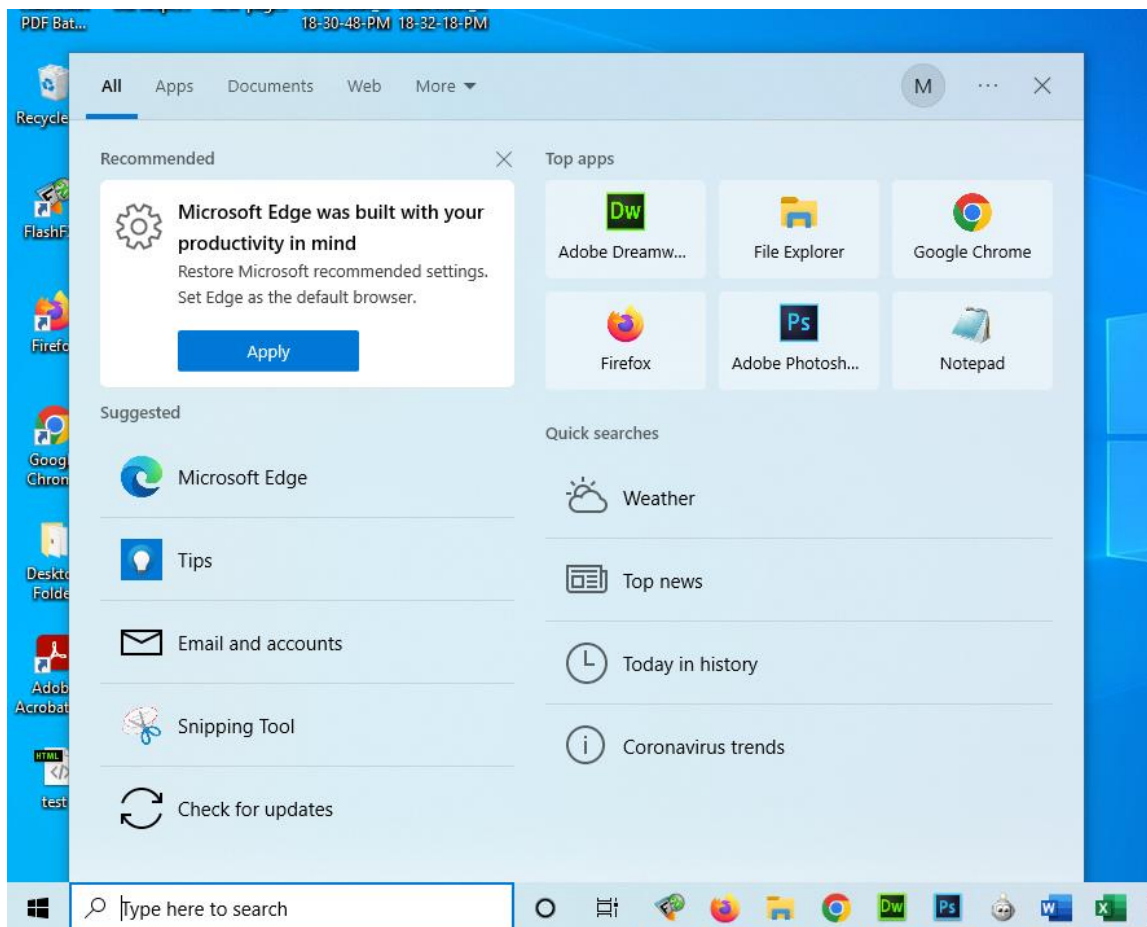
To uninstall the CubexSoft EML Duplicate Remover follow the given instructions –

Before uninstalling the CubexSoft EML Duplicate Remover, make sure that the software is not running in the background of your system. Then you can uninstall the software by following two methods:

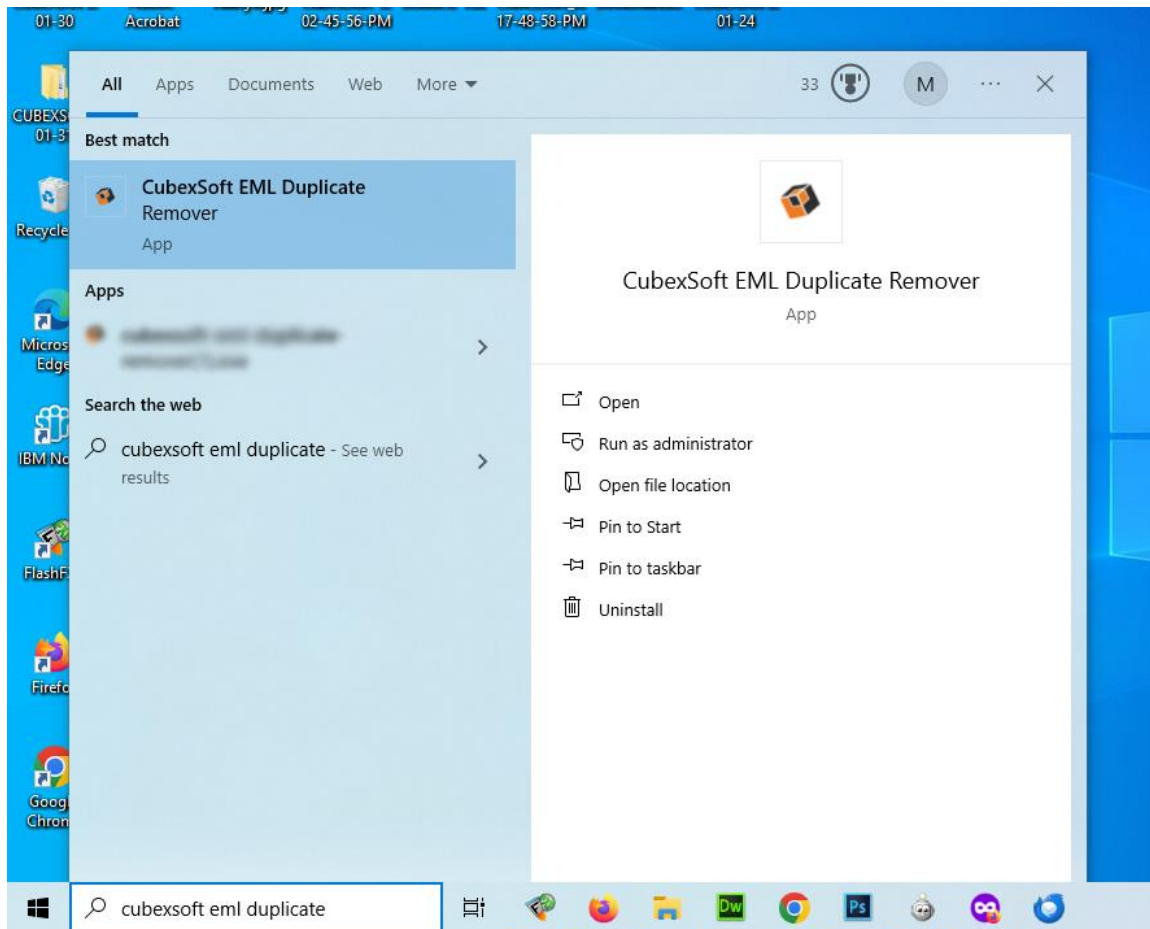
- Uninstall by the Search Button of your system
- Uninstall by the Control Panel

To remove the CubexSoft EML Duplicate Remover by the Search Button, follow the given steps –

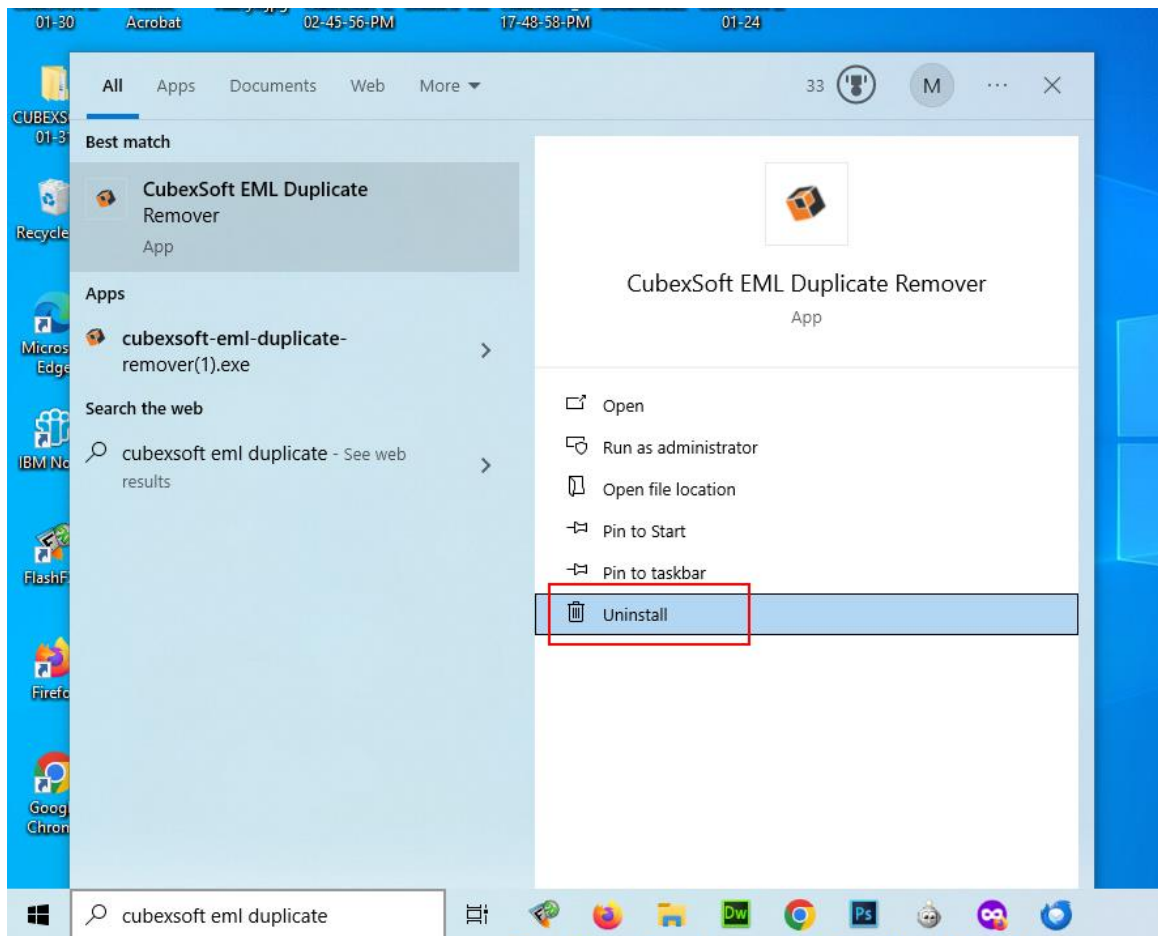
1. Go the Search Section of your computer



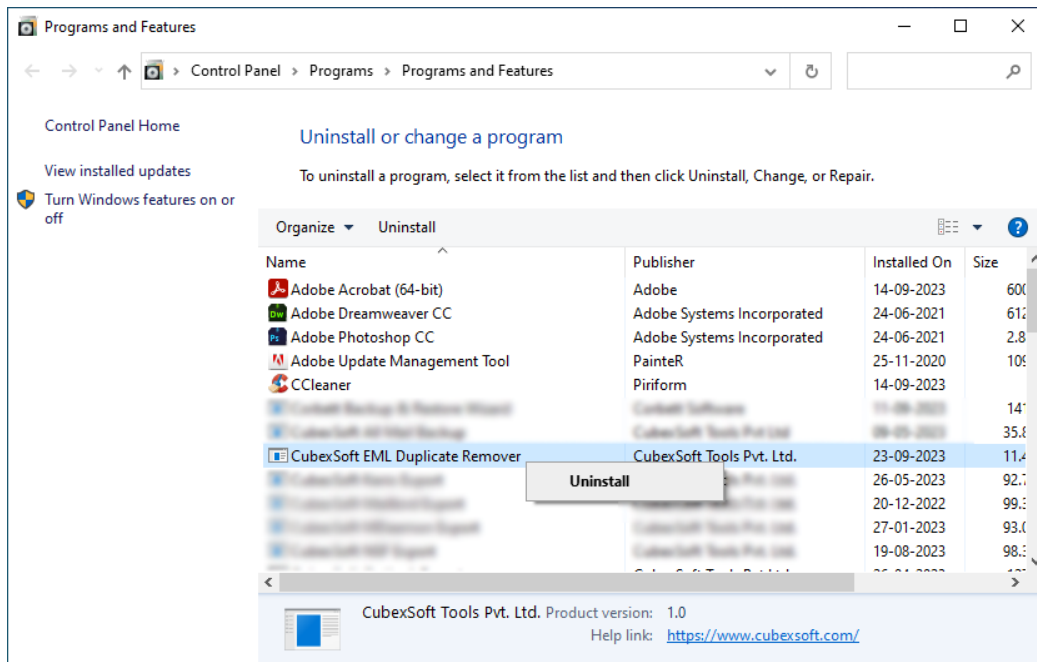
2. Then type CubexSoft EML Duplicate Remover and all the options will be shown there—



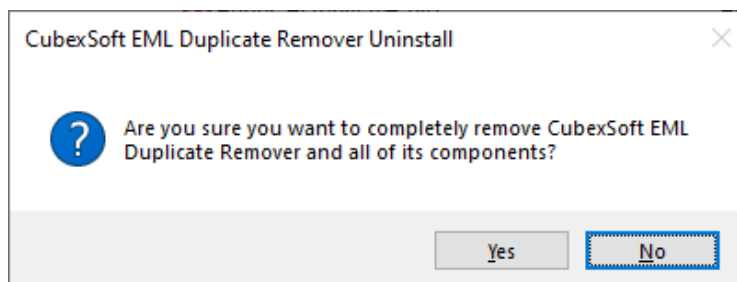
3. From the multiple displayed options, choose uninstall –



4. Then Automatically “Program & Features” Window will open. Select the CubexSoft EML Duplicate Remover and Choose Uninstall/change option.

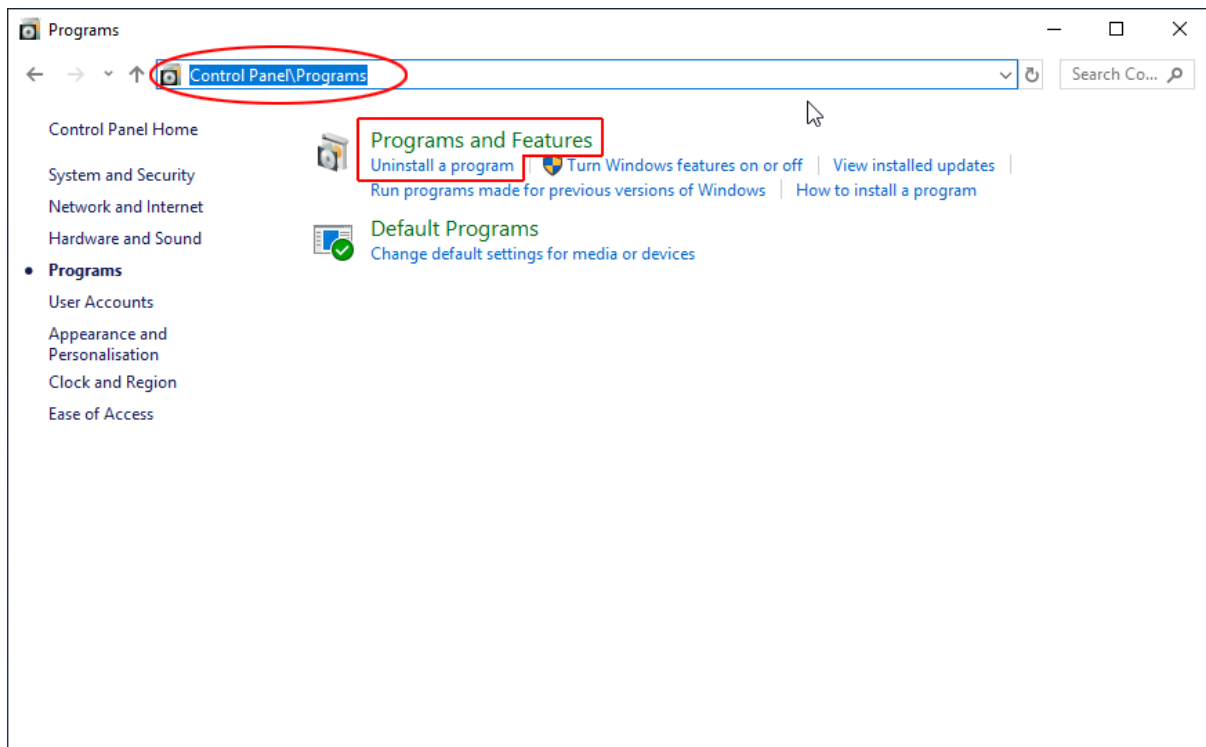


5. If you are sure then click on yes to remove the software

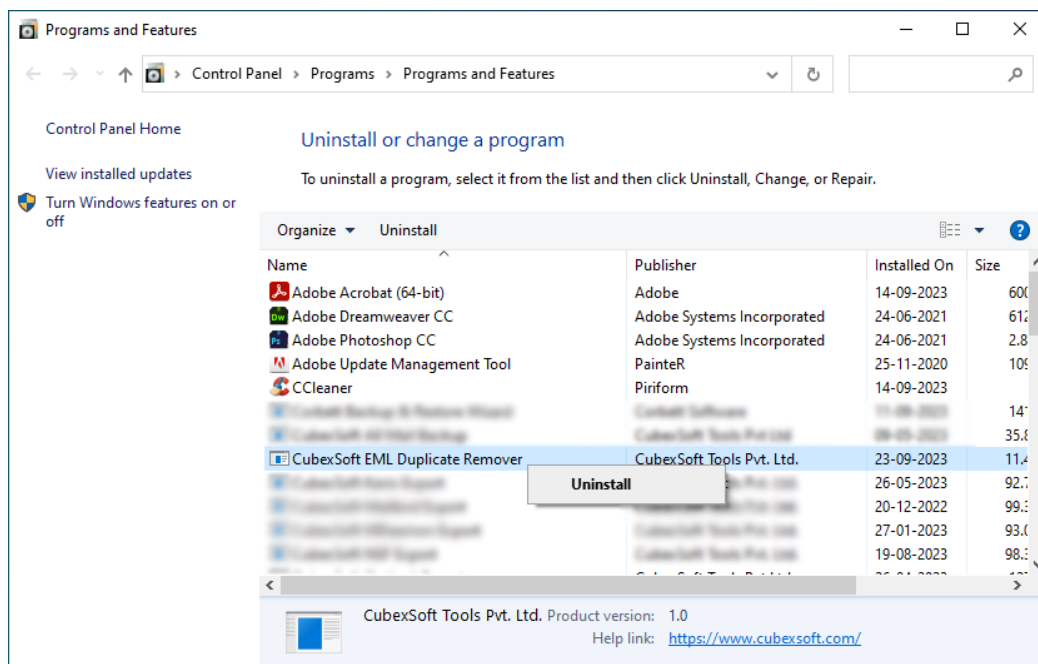


To remove the software by control panel method, follow these instructions –

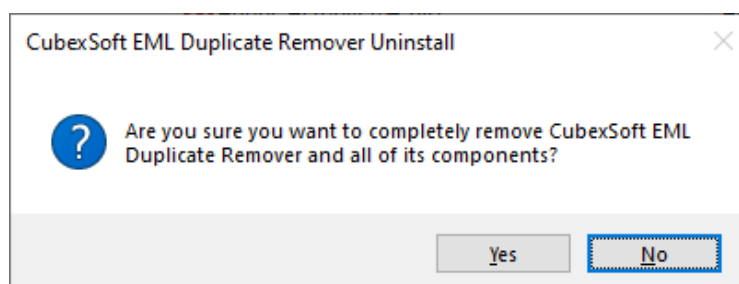
1. Open the “Control Panel >> Programs >> Programs & Features >> Uninstall a program” of your computer



2. Select the software and Click on Uninstall/ Change tab which will be shown there



3. If you are sure of removing CubexSoft EML Duplicate Remover then click on Yes Option.



After that, you can successfully remove the software from your system.